

Therapy Services

There is a wealth of practical help available to meet the developmental and daily needs of your child.

This section brings together information about a variety of organisations, NHS services and therapy providers.

Solent NHS Children's Therapy Service

Physiotherapy, speech and language therapy, and occupational therapy ~ South East Hampshire
03003 002019 ~
www.solent.nhs.uk/our-services/services-listings/childrens-therapy-service

Theraplay

Child and Family Therapy for enhancing and building attachment, self-esteem and trust in others ~ Hampshire
07709 02851

Wholestep CIC (Children's Music & Creative Service)

Creative therapy service that specialises in social, emotional, and behavioural difficulties ~ Hampshire
07769 697401 ~ www.wholestep.org.uk

Farm Buddies

Holistic well-being programme where children make regular visits to a local farm to carry out a variety of jobs ~ South East Hampshire
01420 538793 ~ www.farmbuddies.org.uk

Oak Meadow Sensory Room

Sensory room that has music lights, bubble tubes, fibre optic lights sensory toys and more ~ Fareham & Gosport
01329 316197

Equine Therapy

Equine experience which is based on relationship building with the horses ~ Waterlooville
07958 367915

Online Learning

Virtual learning environments are an alternative form of education for young people who are unable to access mainstream provision.

Home Educated

www.homeeducated.org.uk

The Place2Learn

01256 811718 / 01256 33470
www.bants.gov.uk/educationandlearning/place2learn/guide

- Online: Find extra info and advice on the website
- Phone: Helpline available for support
- Visit: Attend for services or activity
- Outreach: Staff can visit your home or school

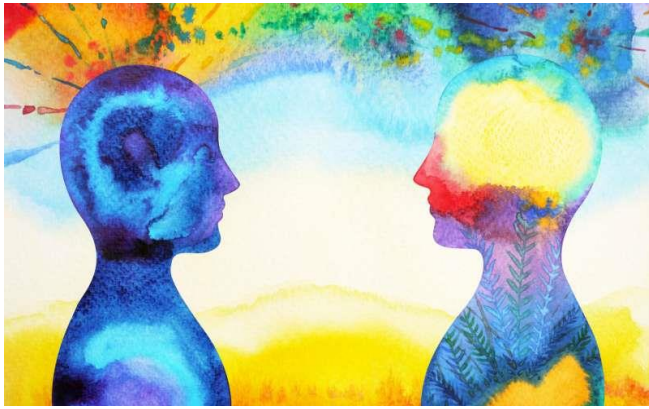


The information on this leaflet has been collated to give a general overview of some of the services that can be found in and around Fareham and Gosport. The Primary Behaviour Service does not personally endorse any of the organisations and accessing the provisions is at your sole discretion and liability. Any information on this leaflet is accurate at the time of accumulating.



Information & Services Available in Hampshire

Impartial information, advice and support for parents of children with SEND, including information about education, health and social care.



Autism Hampshire



Working with children to help them develop skills and strategies to gain greater control over their lives
02380 766162 ~ www.autismhampshire.org.uk

BRAAIN - Be Ready ADHD ASD Information Network



Providing parents and carers with a single website to find local clubs, support groups and financial support
www.braain.co.uk

Dyspraxia Foundation



Providing information, support and advice for all those affected by dyspraxia or with an interest in the condition
01462 454986 ~ www.dyspraxiafoundation.org.uk

The Girl with the Curly Hair Project



Training and support from the perspective of those living with the neurological condition. Originally intended for females, information is also available for boys, families and professionals
07547 793558 ~ www.thegirlwiththecurlyhair.co.uk



CAMHS



Helping children who are finding it hard to manage their emotional and psychological health, and who are suffering with mental health problems
03003 040050 ~ www.hampshirecamhs.nhs.uk

Hampshire Youth Access



Counselling, advice and support for children and young people
02382 147755 ~ www.hampshireyouthaccess.org.uk

Home Start Gosport & Fareham



Regular support and practical advice to help families deal with the challenges they face
01252 398530 ~ www.home-starthampshire.org.uk

Hampshire Healthy Families



Help to access services, organisations and activities in Hampshire
<http://www.hampshirehealthyfamilies.org.uk/fareham-and-gosport>

Mermaids



Provides a helpline aimed at supporting transgender youth, their families and professionals working with them
08088 010400 www.mermaidsuk.org.uk

SEN Services and Charities

Information about support that is available in Hampshire for the whole family. These services offer advice for parents of children who are out of, or struggling with, education, including children who are at risk of exclusion, have already been temporarily or permanently excluded, school refusers, those with emotional or behavioural difficulties, special educational needs and social, emotional and mental health difficulties.



Area Inclusion Coordinator Service



Offers support and guidance on including children with additional needs in Hampshire's Early Years Education settings
01264 387443
www.hants.gov.uk/socialcareandhealth/childrenandfamilies/childcare/developmentconcerns/areainclusion

Contact a Family SEN National Advice Service



Parents and carers who have concerns about any aspect of their child's education can access in-depth and personalised advice from SEN advisers
08088 083555 ~ www.contact.org.uk/advice-and-support

Hampshire Parent Carer Network



Charitable organisation running training and workshops to help build parental confidence, skills and resilience
01962 853153 ~ www.hpcn.org.uk

Hampshire SENDIASS



Offers advice and signposts services to parent carers, children and young people with special educational needs and disabilities
08081 645504 ~ www.hampshiresendiass.co.uk

Family Information and Services Hub



Charity providing grants for families on low incomes raising disabled children and young people
01904 550055 ~ www.familyfund.org.uk